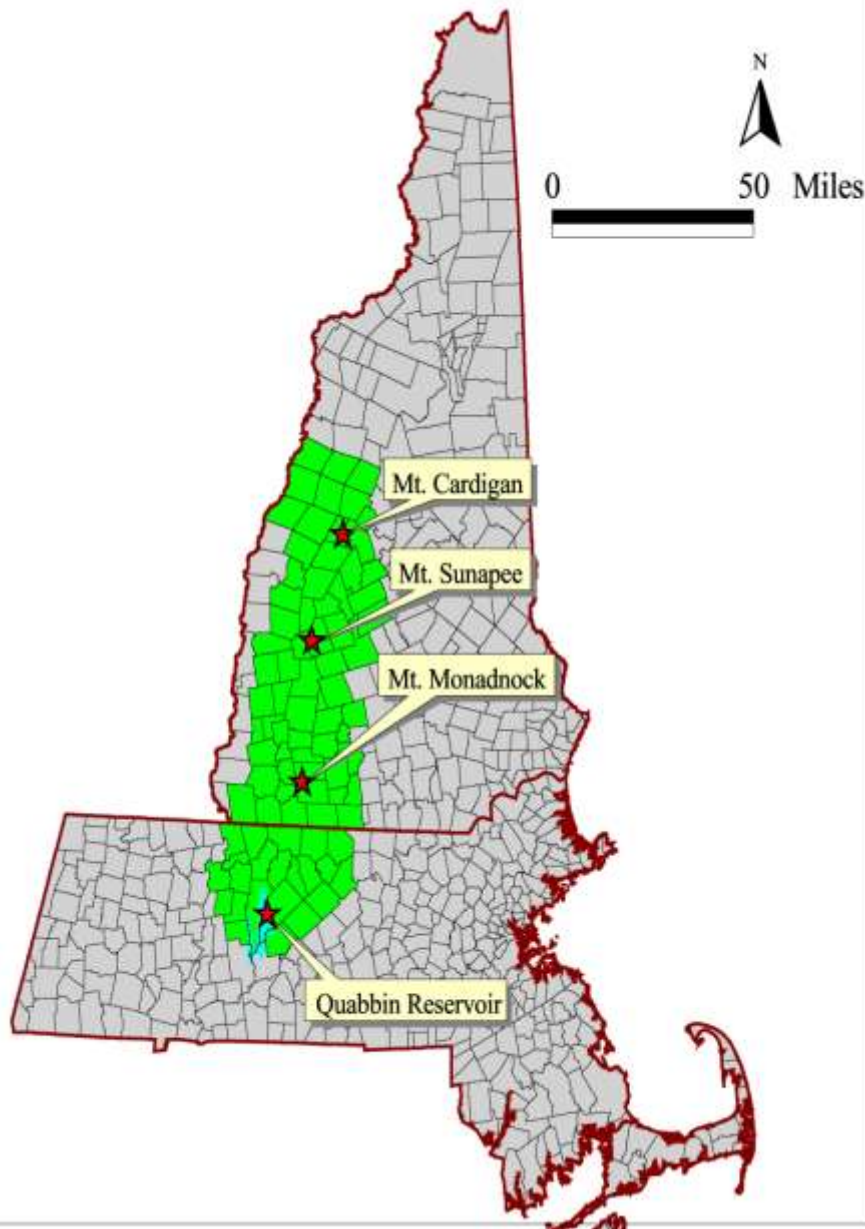


# Quabbin to Cardigan (Q2C)



## GETTING ORIENTED: What and Where is the Q2C?



- Two-state region bounded by Quabbin Reservoir in the south, Mount Cardigan and WMNF in the north.
- Forms watershed divide between Connecticut River and Merrimack River.
- 2 million acres, or 3,000 sq. miles. 85 municipalities
- Peaks includes Mt. Grace in MA, Monadnock, Kearsarge, Sunapee, and Cardigan in NH.

# Ashuelot River Valley & Mount Monadnock, NH



# Mount Cardigan, NH

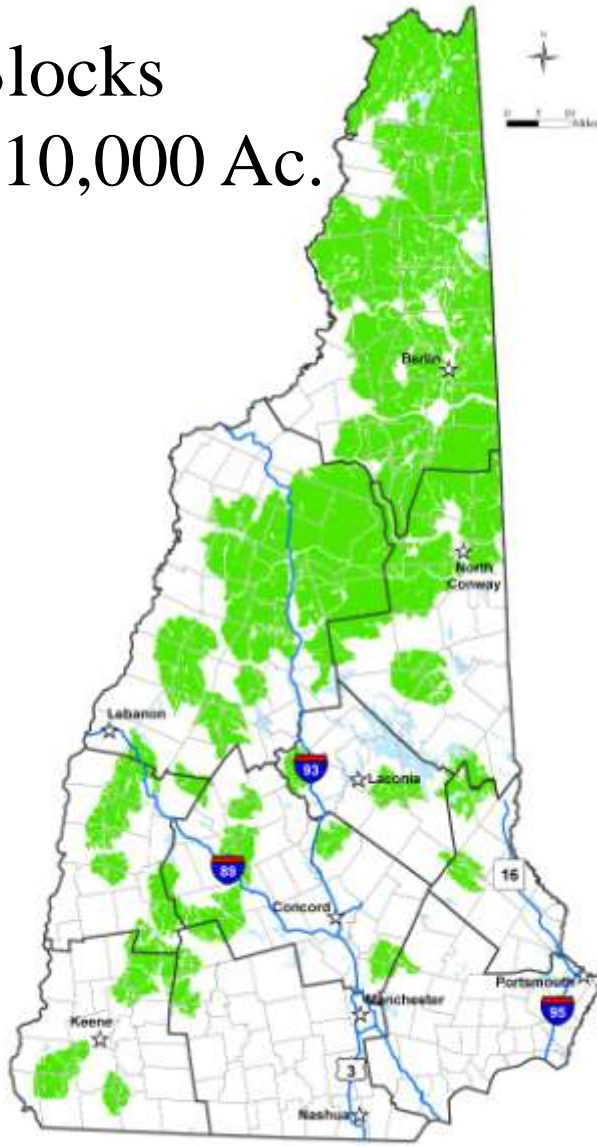


Credit: Chris Wells

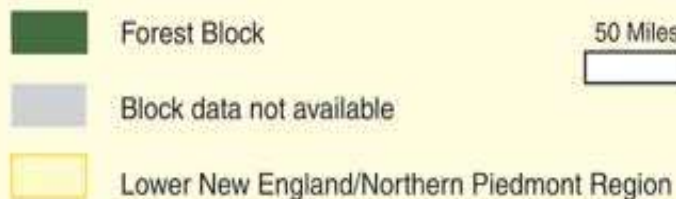
# What makes the Q2C Region Special?

- Q2C Region contains some the largest unfragmented forest blocks left in central New England.
- These forests are also still relatively well connected to each other, and are part of a larger regional corridor.

Blocks  
>10,000 Ac.



## Priority Forestlands

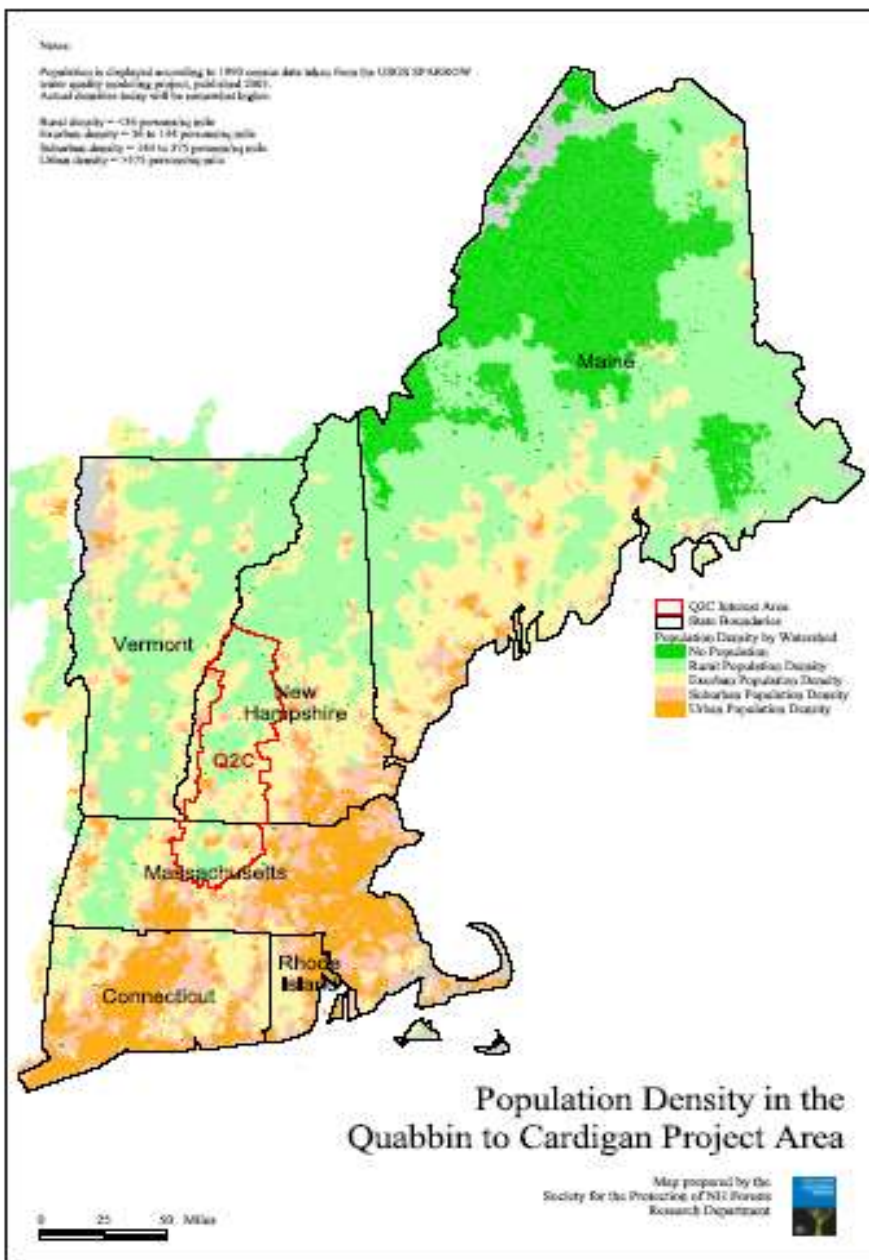


## REGIONAL CONTEXT: Resource Value

- Water: high quality watershed for **Merrimack** and Upper Connecticut. (\* new USFS report)
- Habitat: priority in both states' wildlife action plans (SWAPs).
- Recreation: public & private recreation areas, well-maintained trails (\* NPS trails study).
- Wood: sawlogs, pulp, biomass.
- Climate: carbon sink, adaptation corridor.

# REGIONAL CONTEXT: The Threat: Population, Parcelization & Conversion

- Q2C region is a “last frontier” in central New England’s transformation from a rural landscape to a suburban/exurban one
- “Invisible” change: ownership turnover, parcelization.
- “Visible” change: conversion along major roads corridors, unsustainable timber harvesting.



# The Q2C Partnership:

A public-private effort to conserve the region



- Launched in 2003 with help from LTA, SPNHF has coordinated since 2004.
- 27 non-profits and public agencies in two states;
- Partners collaborate & coordinate on project finance, communications, conservation planning, transaction work.
- Partnership endorses and packages projects for Forest Legacy
- New transaction grants program via NRCS earmark.

## Quabbin to Cardigan Partnership Conservation Focus Areas

Map prepared by the  
Bureau for the Protection of Wild Forests  
Research Department

-  Q2C Boundary Area
-  Q2C Conservation Core-Park Areas
-  Q2C Supporting Landscapes
-  State Lines
-  Town Boundaries
-  Long Distance Trails
-  Wetland Water Bodies
-  Conservation Land

### ACKNOWLEDGEMENTS

Most of the data used in this map were provided by the Bureau for the Protection of Wild Forests, the Massachusetts Department of Environmental Management, and the Massachusetts Department of Conservation and Recreation. The map also includes data from the Massachusetts Department of Transportation, the Massachusetts Department of Environmental Management, and the Massachusetts Department of Transportation. The map also includes data from the Massachusetts Department of Environmental Management, the Massachusetts Department of Conservation and Recreation, and the Massachusetts Department of Transportation.

The map was prepared by the Bureau for the Protection of Wild Forests, the Massachusetts Department of Environmental Management, and the Massachusetts Department of Conservation and Recreation. The map also includes data from the Massachusetts Department of Transportation, the Massachusetts Department of Environmental Management, and the Massachusetts Department of Transportation.



New Hampshire

Massachusetts



# The Q2C Plan

- Adopted in June, 2007.
- 587,000 acres of core “conservation focus areas;”
- 418,000 acres of “supporting landscapes;”
- Totals about one million acres, or half the region’s area.
- Core Q2C conservation focus areas are currently 39% protected, *358,000 acres still to go.*
- Supporting landscapes are currently 26% protected, *309,000 acres still to go.*

# USDA/USFS - Forest Legacy Program

## Projects funded in Q2C Region Since Program Inception

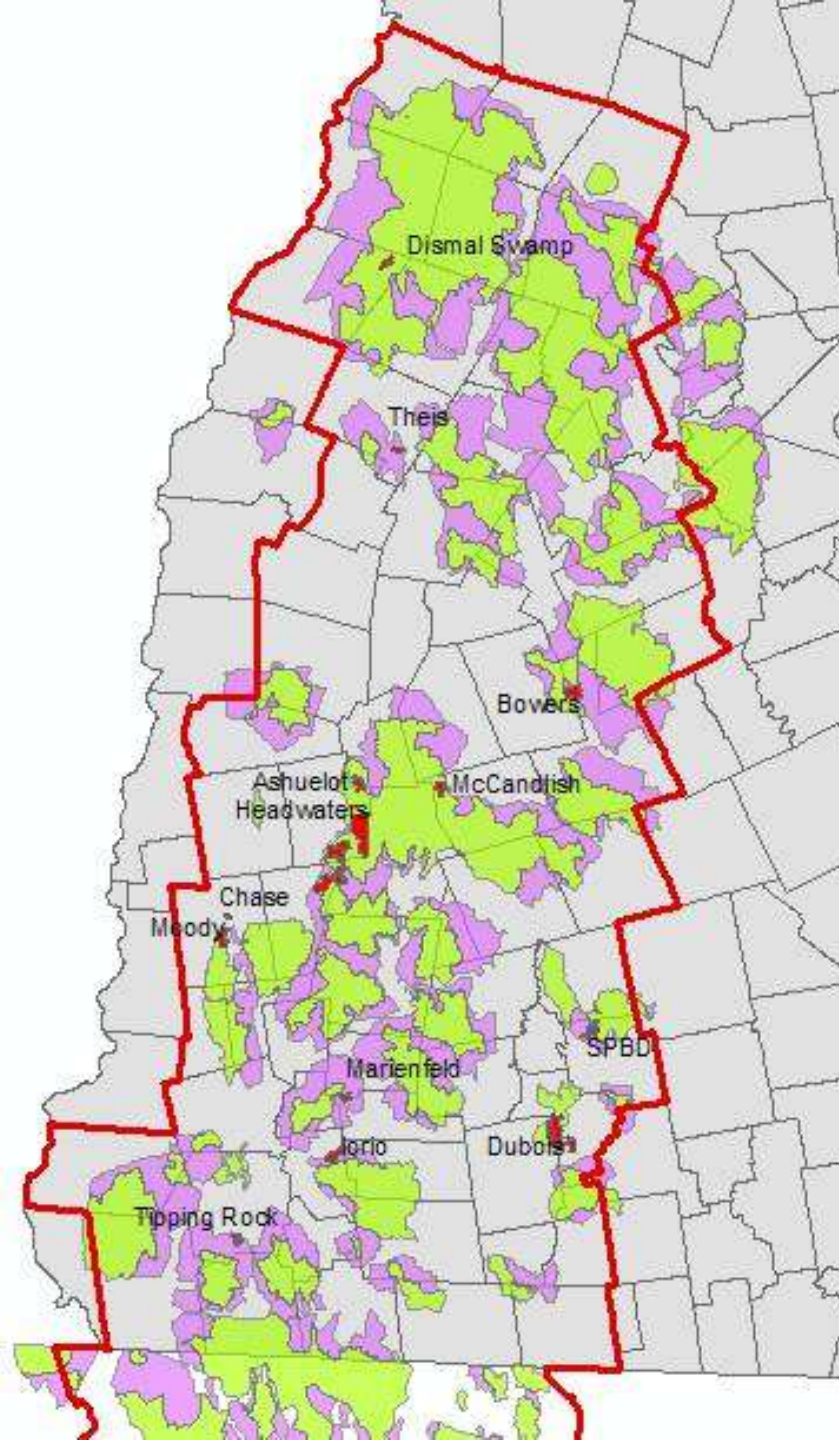
Cardigan Highlands - Green Acres (NH)	6,578	3,618,000	FY09-10
Crotched Mountain (NH)	1,165	2,750,000	FY08-09
Eagleville Pines (MA)	300	830,000	FY04
Hutchinson (MA)	490	450,000	FY95
Metacomet-Monadnock (MA)	934	1,945,000	FY09-10
Pillsbury-Sunapee (NH)	7,000	2,530,000	FY04
Quabbin Corridor (MA)	2,100	2,500,000	FY06
Robb Reservoir (NH)	1,700	3,550,000	FY06-07
Smarts Mountain (NH)	3,900	873,000	FY01
Southern Monadnock Plateau I (MA)	2,270	2,500,000	FY07
Southern Monadnock Plateau II (MA)	1,825	4,420,000	FY09-10
Two-Mile Land Bridge (MA)	470	330,000	FY99

---

**28,732**      **\$26,296,000**

# USDA/NRCS – Transaction grants

- Via Congressional earmark FY09-10.
- Uses NRCS funds to cover transaction costs on land transactions in Q2C (NH only for now)
- Open to NGOs, state agencies and towns
- Must protect lands identified in Q2C plan
- So far \$356K awarded, 9,218 acres protected
- About 95% of all acres protected are Q2C priority acres



# NOAA/NMFS-Fish Habitat Funds

- Via Congressional earmark FY05-10
- Using habitat restoration funds for conservation
- Targeted to Merrimack River watershed
- \$1.74 million in total funding
- 3,531 acres, 7.8 miles of river frontage
- 1,985 of this in two large headwaters projects that were also Q2C core focus areas.

# Other emerging federal partnerships

- USDA/NRCS cost share programs – NH NRCS is currently giving special preference to landowners in Q2C priority areas for WHIP funding. This will likely expand to other cost-share programs in the coming year;
- DOI/USFWS Conte Refuge – revised CCP may include new Conte acquisition and “partnership” areas that are also Q2C priority areas.
- DOI/NPS Rivers and Trails – will be providing consultation on first phase of a trails study of NH portion of Q2C.

# Key Questions

- Q2C has been focused to date on land protection not land management; but we are at a moment of opportunity to better integrate USFS/NRCS landowner assistance programs in the region.
- What can we learn from CAMNet as we add land management tools to complement our land protection goals?
- What can CAMNet learn from us about working collaboratively in a parcelized mosaic of state, NGO and private ownerships?