



**Meet the
Maine Lobstermen's Association**

**David Cousens
April 16, 2011**



Maine Lobstermen's Association "MLA"

Mission

The MLA advocates for a sustainable lobster resource and the fishermen and communities that depend on it.

Since 1954

About the MLA

- Not-for-profit, state-wide industry organization founded in 1954
- Advocate for lobstermen, the lobster industry and coastal communities



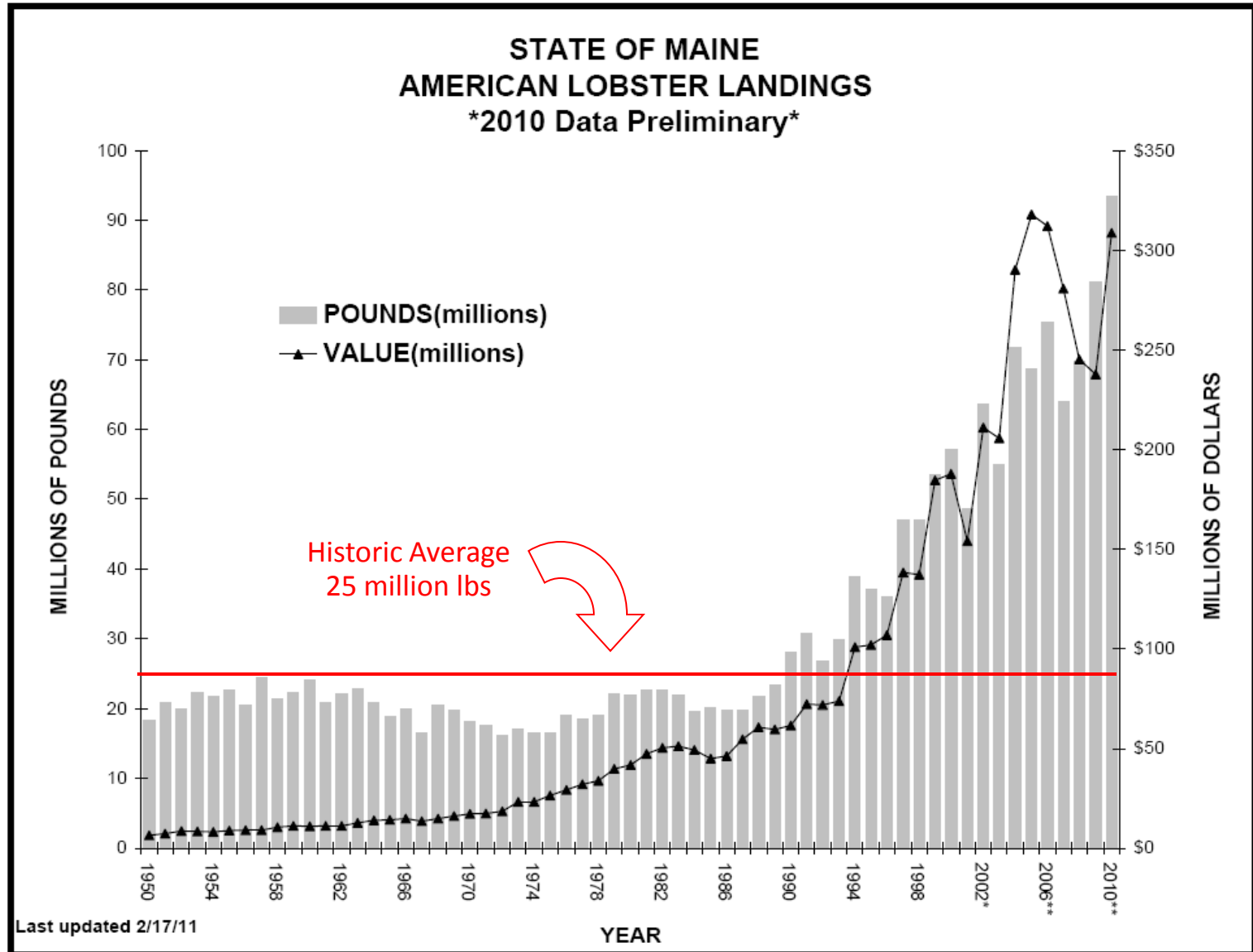
- Seek to be fair & proactive – focus on big picture
- 1200 members from Kittery to Eastport (lobstermen & businesses)
- Governed by a Board of Directors (24) comprised of lobstermen along the Maine coast



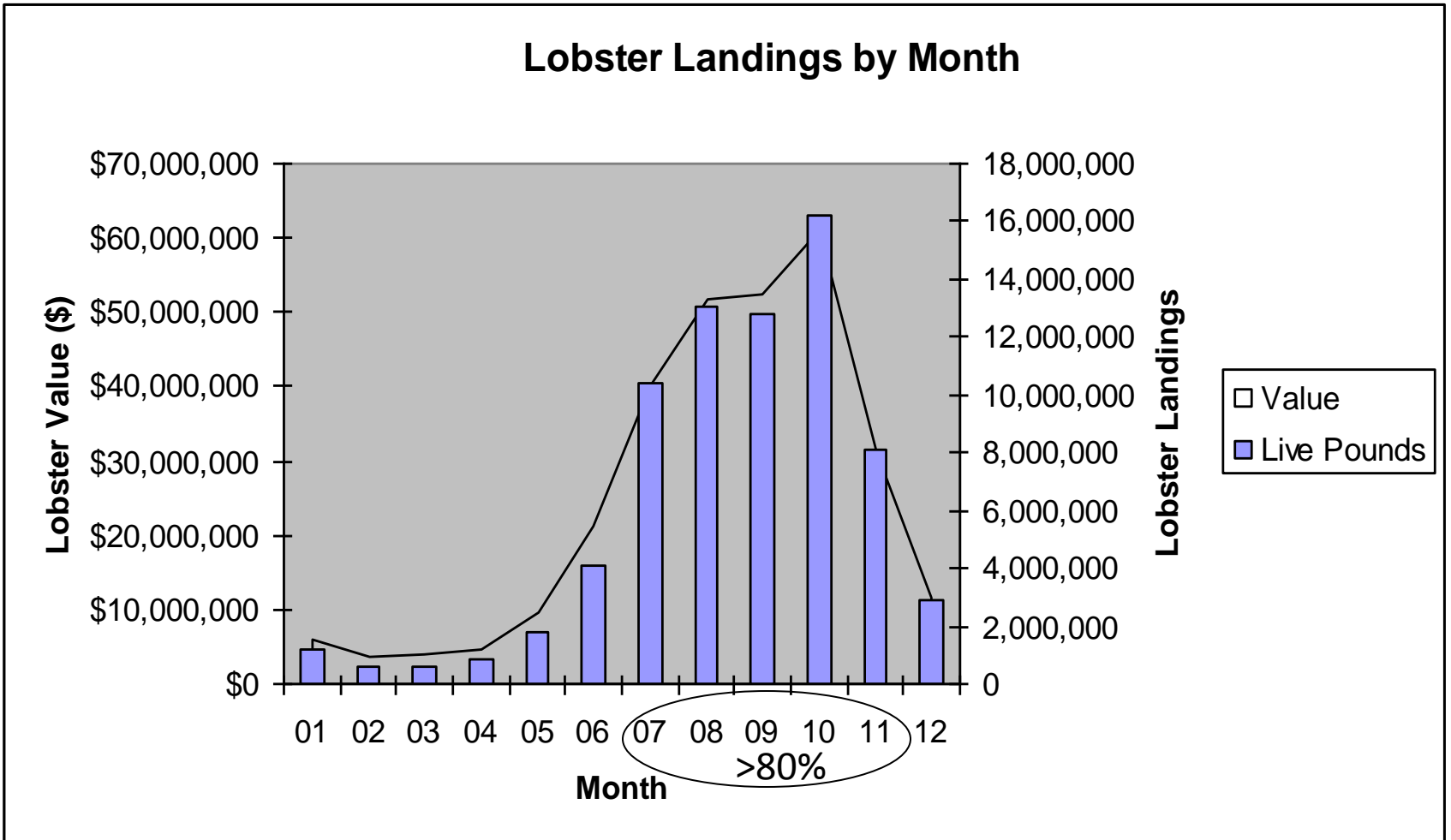
Overview of Maine Lobster Fishery

- ~6,263 commercial licenses (5379 com + 884 stud/app)
 - 75% exclusively inside coastal waters
 - 25% outside 3 miles (~1400 fed permits)
- Majority of landings July – Nov
- 2010 landings 93+ million lbs
- Ex-vessel value at ~\$309 million; avg \$3.31/lb
 - Peak value in 2005 at \$317 million
 - Avg 4.63/lb (68 million pounds)


Landings and Value

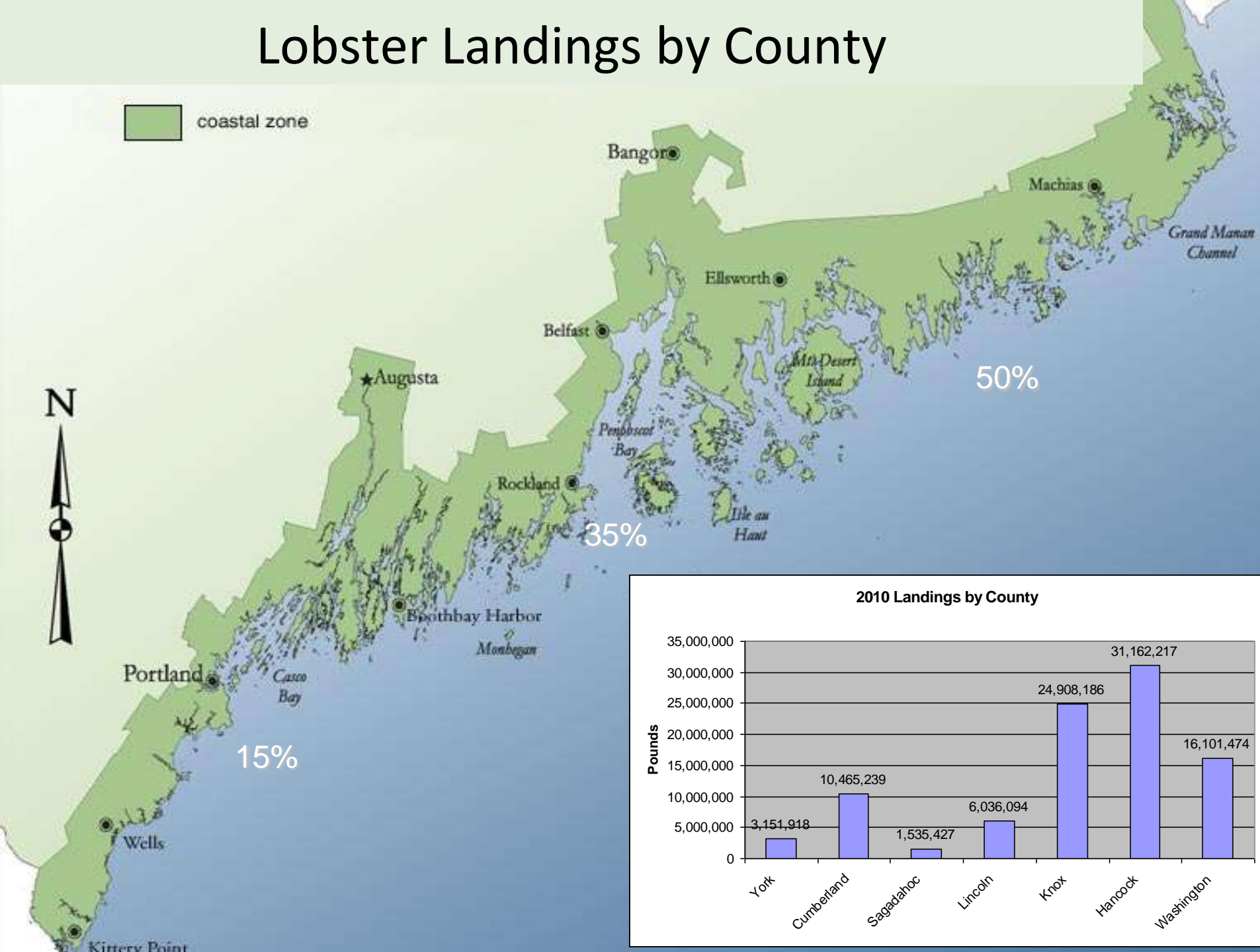


Seasonal Landings Cycle

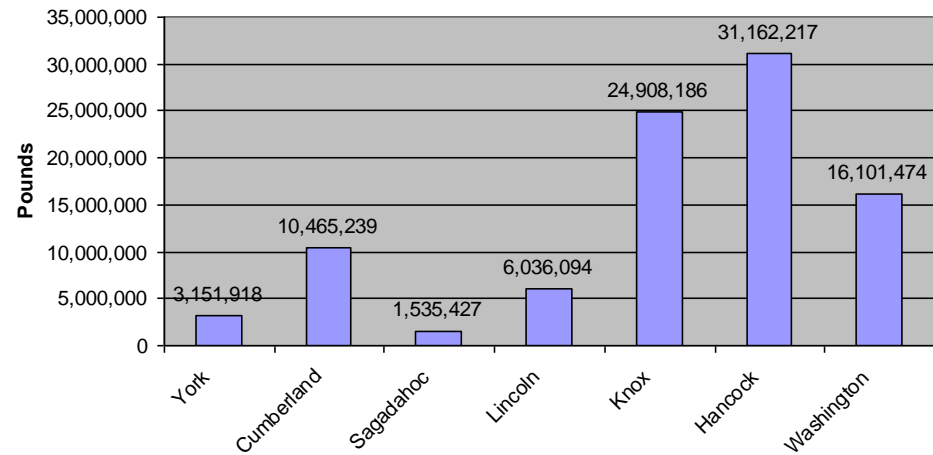


Lobster Landings by County

 coastal zone



2010 Landings by County



Lobster Conservation Measures

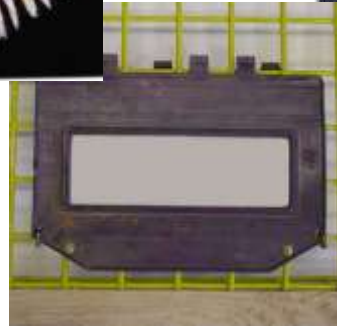
V-notch Protection



Zero Tolerance



3 ¼" min carapace



Escape Vents



Berried Females



Trap Limits (800 max)



No dragging lobster

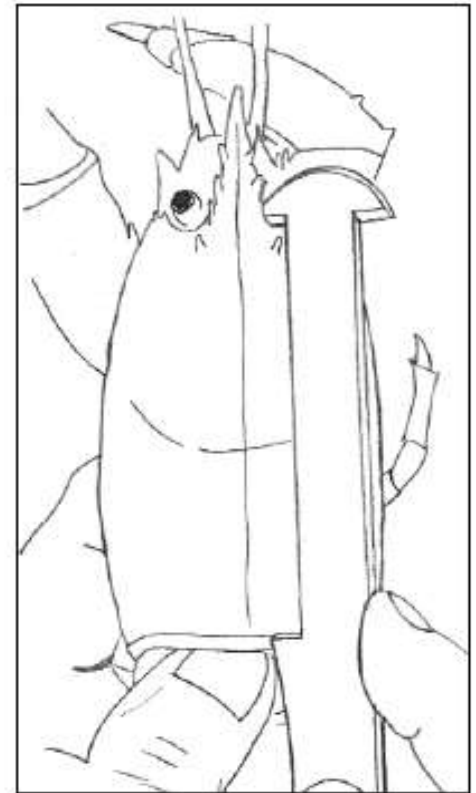


Oversize Protection >5"

Illegal Lobsters



Minimum Legal Size (3 ¼" carapace) 1920



Protect Oversized Lobsters (>5" carapace) 1933



Protect Egg Bearing Females (1889)



V-notch Egg Bearing Females

1917, current regs 1975



Trap Only Fishery (1961)



Lobster traps and buoys must be marked by owner (1885)

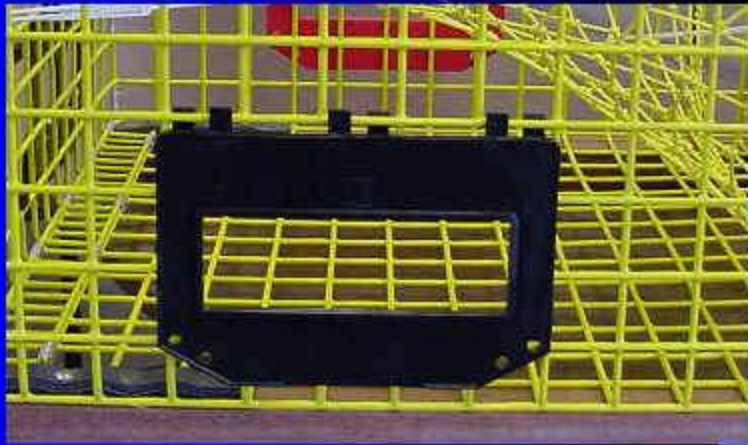


Display Buoy Colors on Boat (1968)



Escape Panels (1979) and Biodegradable Ghost Panels (1990)

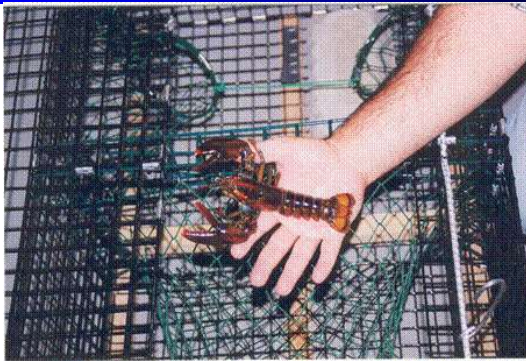
A Legal Escape Vent



Biodegradable Escape Panels



Size must be at least an unobstructed $3 \frac{3}{4}'' \times 3 \frac{3}{4}''$

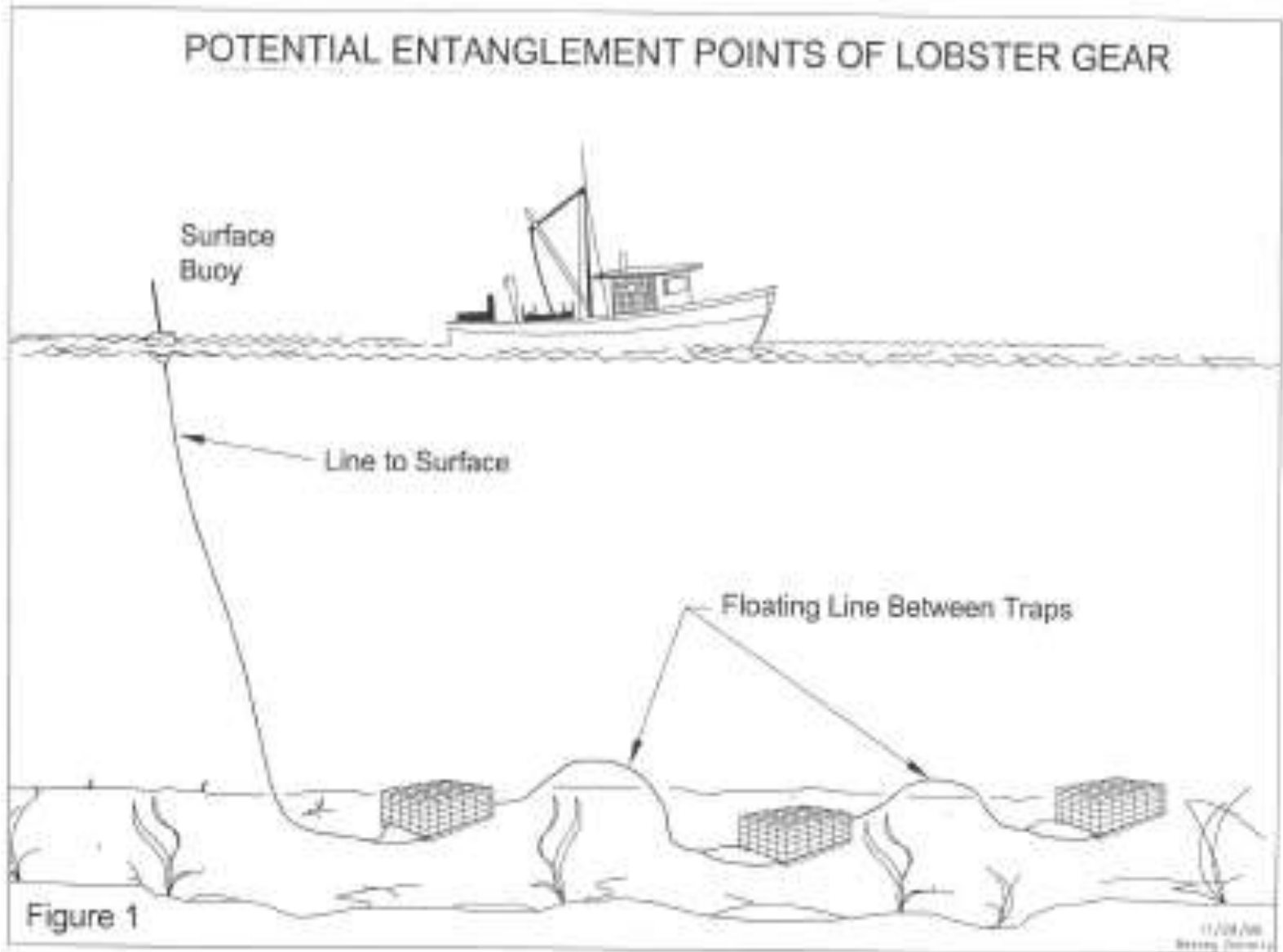


No fishing ½ before sunrise & ½ hour after sunset June 1 to Oct 31 (1957)

No Sunday fishing June 1 to August 31 (1967)

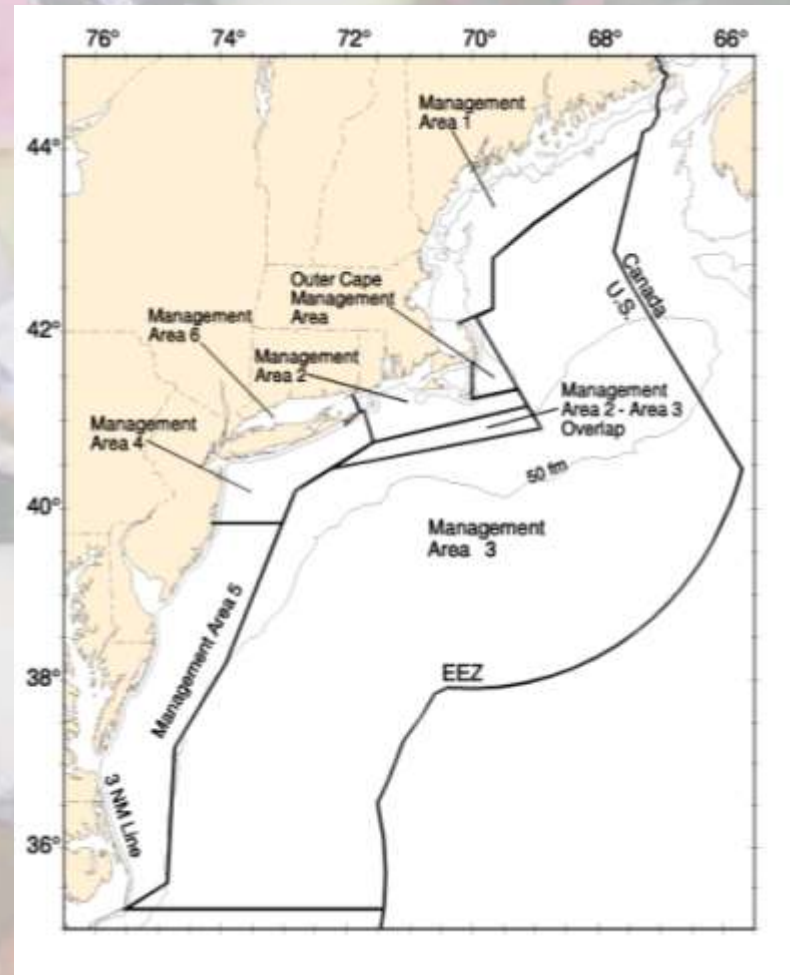


Whale Rules



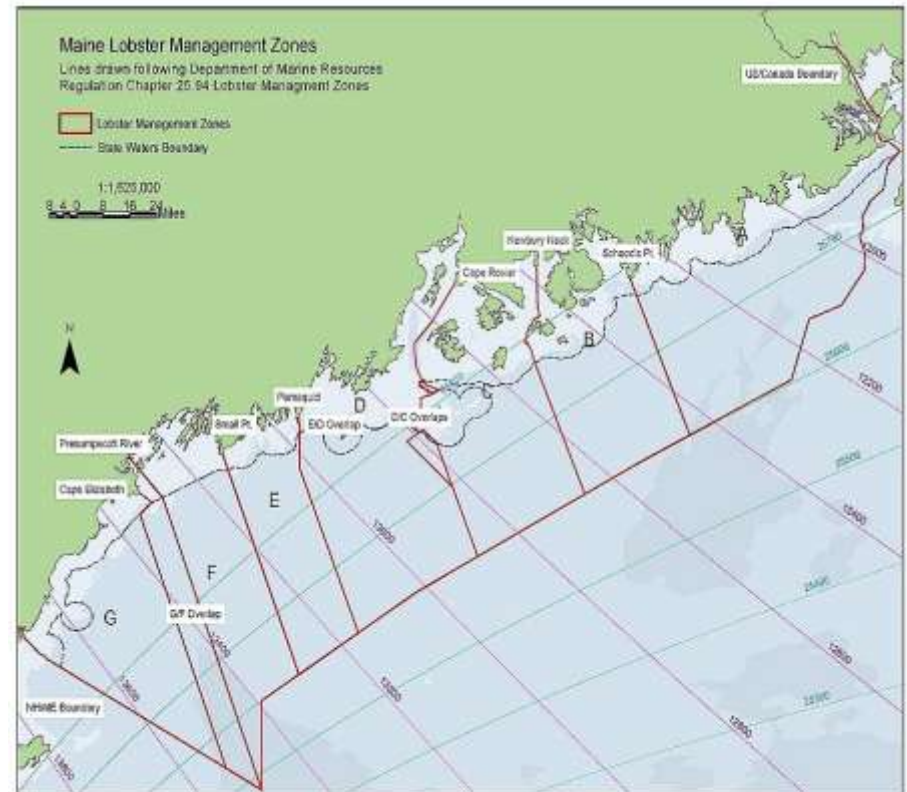
Management Overview

- Federal: NOAA Fisheries, ESA & MMPA, herring
- Regional: Atlantic States Marine Fisheries Commission (ASMFC) has authority (ME to NC for lobster resource)
- State: authority to create laws and regulations in state waters (3 mile line)
- Zone Councils: authority over local issues as allowed by the Legislature
- Local: Traditional fishing territories & stewardship



Key Elements of Lobster Fishery

- Conservation measures
 - min, max, eggers, vnotch, no dragging
- Zone council system
 - # traps, trap configuration, time of day
 - limits WHERE you can fish
 - limited entry ratios, controlled entry
- Apprentice program
 - provides entry into fishery
- Owner operator fishery
 - one man, one boat, one set of traps
 - no corporate ownership
 - promotes stewardship
- Lobster Territories
 - limits expansion of effort



Owner Operator Fishery

- License and tags assigned to an individual with a vessel
 - Commercial fishing is a primary economic driver
 - Income generated is spent locally
 - Each dollar generated by lobster landings generates several more (conservatively 3.5)
 - Leverage tremendous economic activity and creates jobs in areas such as boat building, retail, buyers, processors, etc
- No corporate ownership
- No vertical integration
- No sale or transfer of licenses or traps allowed
- Promotes stewardship

